

# TELLING PRODUCT SUBMITTAL DATA

## TELLING PART #: TRC22X Series A

**MATERIAL:** 12ga (97 mil), 14ga (68 mil), 16ga (54 mil)

**COATING:** galvanized G60 and G90

### STEEL SPECIFICATIONS:

1. Steel meets ASTM A1003, Grade 50 Type H (ST50H).
2. Coating meets ASTM A1003, A653 for either G60, G90, or equivalent.



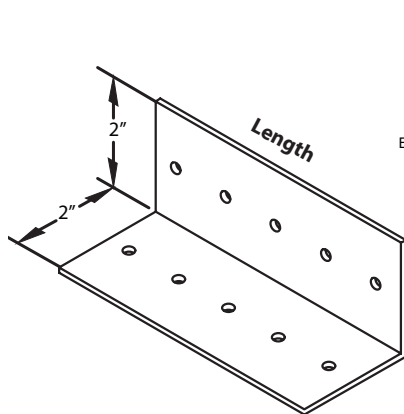
### TELLING RIGID CLIP SHEAR CAPACITIES (LBS)

PART#	CLIP THK. (MIL)	Yield F(y)	Tensile	Length (in)	#10-16 SCREWS	STUD		
						33 mil (20 ga) (33ksi)	43 mil (18 ga) (33ksi)	54 mil (16 ga) (50ksi)
						F1	F1	F1
TRC223	54 (16ga)	50 ksi	65 ksi	3	3	294	437	888
	68 (14ga)	50 ksi	65 ksi	3	3	294	437	888
	97 (12ga)	50 ksi	65 ksi	3	3	294	437	888
TRC225	54 (16ga)	50 ksi	65 ksi	5	3	424	631	1281
					5	624	929	1767
	68 (14ga)	50 ksi	65 ksi	5	3	424	631	1281
					5	624	929	1888
	97 (12ga)	50 ksi	65 ksi	5	3	424	631	1281
					5	624	929	1888
TRC227	54 (16ga)	50 ksi	65 ksi	7	3	474	705	1433
					7	989	1472	2475
	68 (14ga)	50 ksi	65 ksi	7	3	474	705	1433
					7	989	1472	2991
	97 (12ga)	50 ksi	65 ksi	7	3	474	705	1433
					7	989	1472	2991
TRC229	54 (16ga)	50 ksi	65 ksi	9	3	496	738	1500
					9	1359	2029	3183
	68 (14ga)	50 ksi	65 ksi	9	3	496	738	1500
					9	1359	2029	4010
	97 (12ga)	50 ksi	65 ksi	9	3	496	738	1500
					9	1359	2029	4122
TRC2211	54 (16ga)	50 ksi	65 ksi	11	3	507	755	1534
					11	1738	2587	3890
	68 (14ga)	50 ksi	65 ksi	11	3	507	755	1534
					11	1738	2587	4901
	97 (12ga)	50 ksi	65 ksi	11	3	507	755	1534
					11	1738	2587	5255

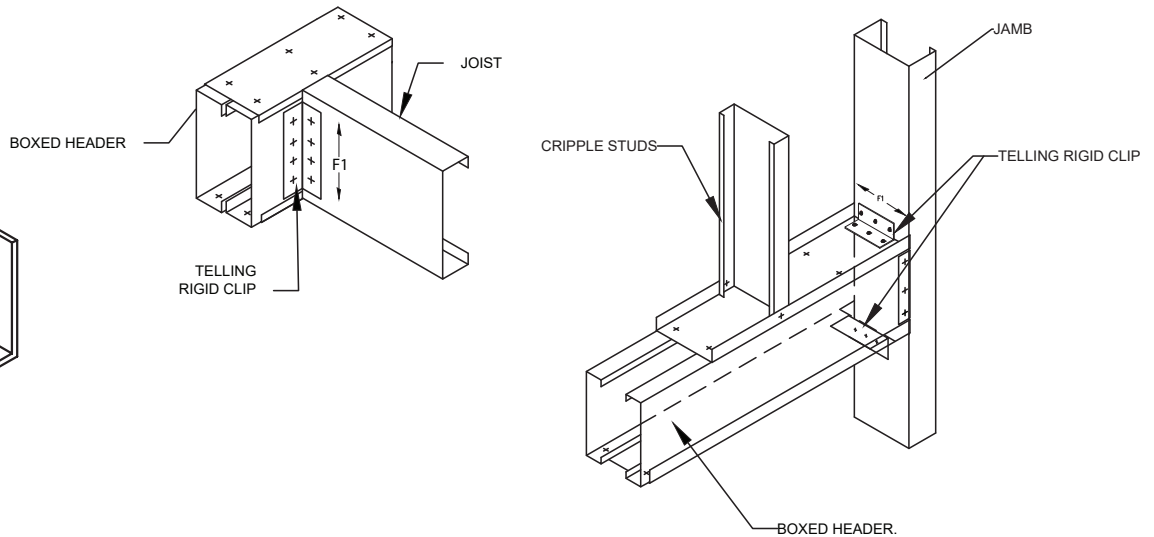
#### TABLE NOTES:

1. The tabulated clip capacity values are based on the AISI Research Report PR18-4 "Load Bearing Clip Angle Design" phase II and accepted industry design standards.
2. The anchor strength to the support must be calculated separately, the minimum of the tabulated clip capacity and the anchor strength must be used. Anchor strength may be less than the tabulated clip capacity.
3. Appropriate interaction equation must be used for clips subjected to the combined shear tension and compression forces.
4. All loads calculated by an independant third party PE engineer.

### TRC CLIP



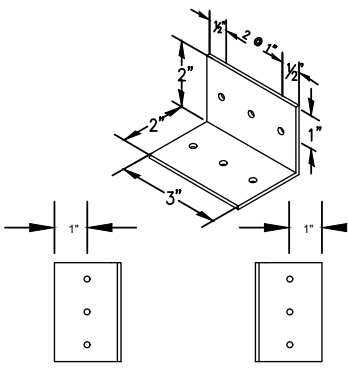
### TRC APPLICATIONS



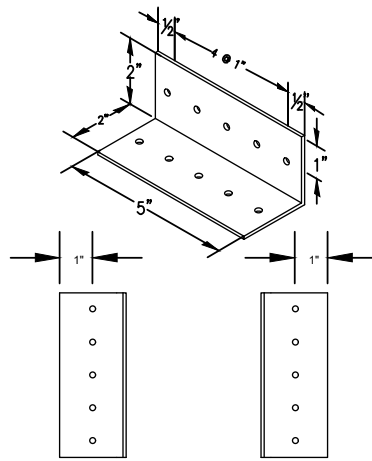
# INNOVATION, SERVICE, QUALITY

www.BuildStrong.com • 1-866-372-6384

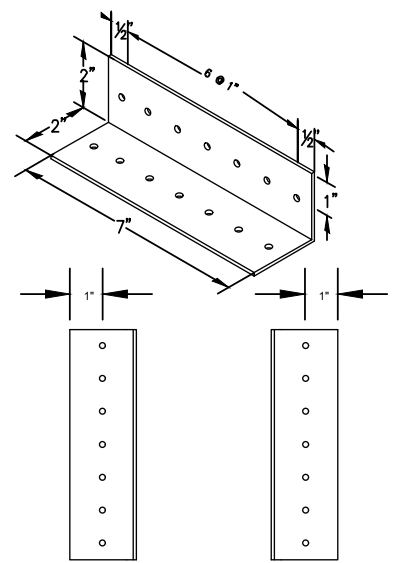




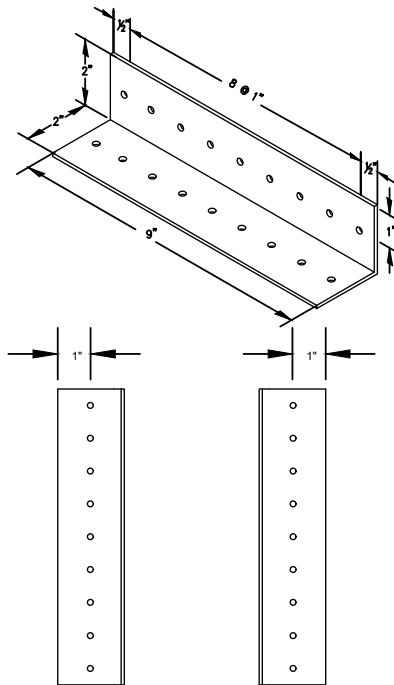
TRC 223



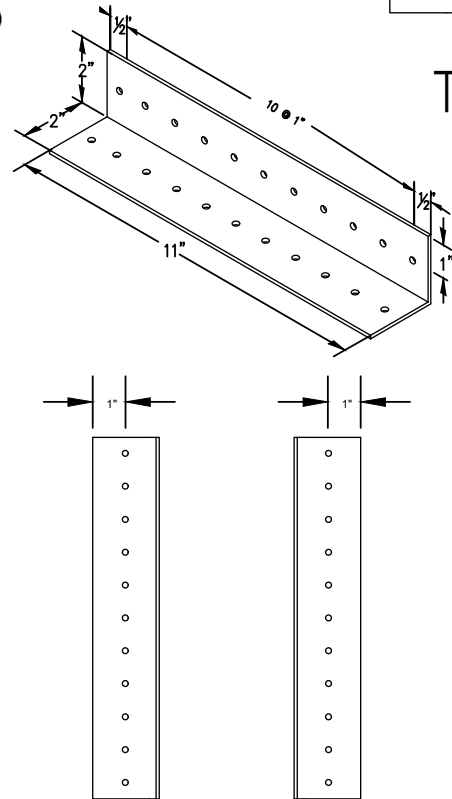
TRC 225



TRC 227



TRC 229



TRC 2211

**MATERIAL SPECIFICATIONS**

DESIGN THICKNESS, YIELD, TENSILE

54 MIL (0.0566"), 50ksi, 65ksi

68 MIL (0.0713"), 50ksi, 65ksi

97 MIL (0.1017"), 50ksi, 65ksi

ASTM 1003, GRADE 50 TYPE H (ST50H)  
G60 AND G90 HOT DIPPED GALVANIZED



**INNOVATION, SERVICE, QUALITY**

[www.BuildStrong.com](http://www.BuildStrong.com) • 1-866-372-6384

